

ACROW-RICHMOND  
THE HIDDEN STRENGTH™

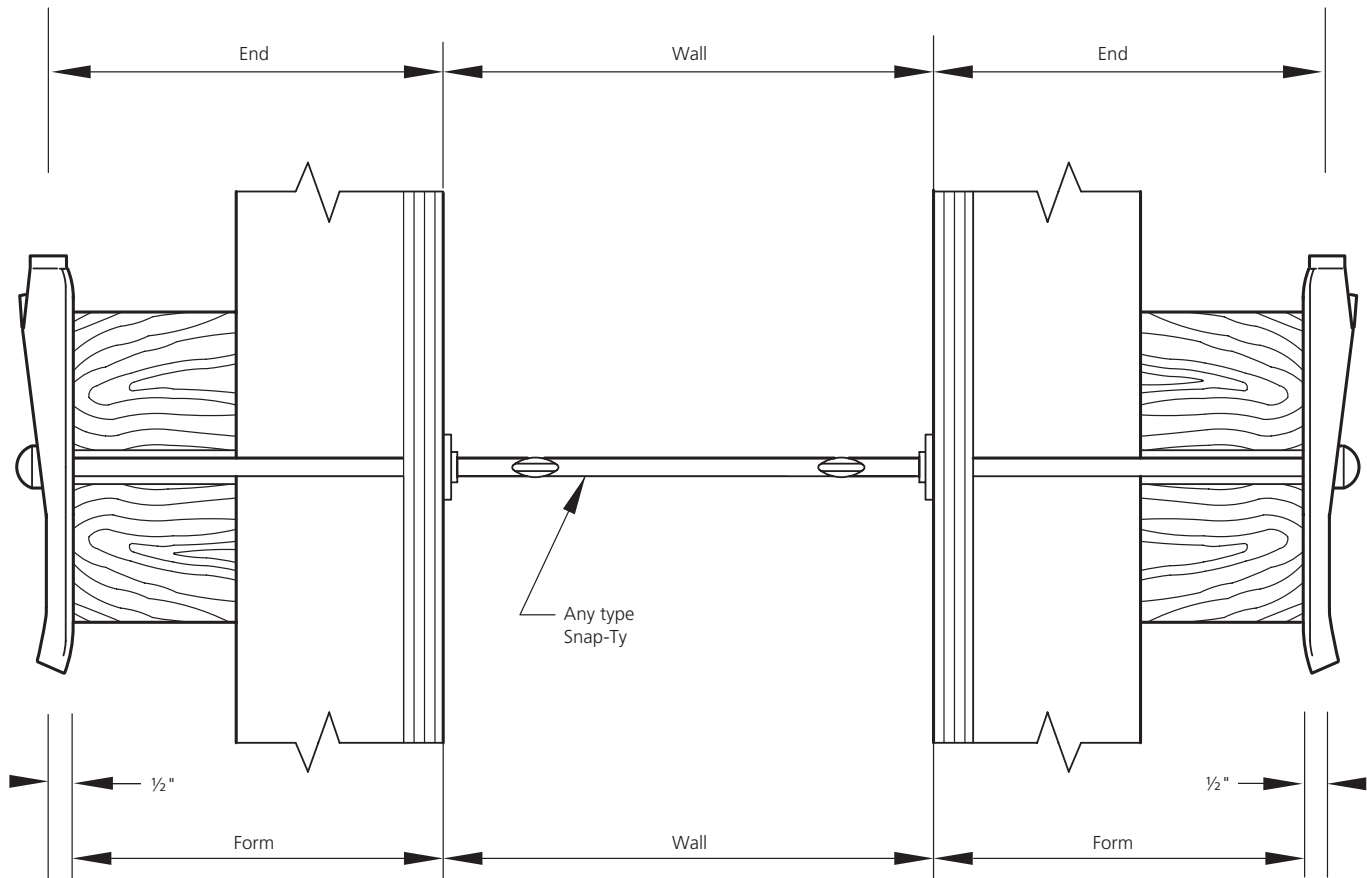
## FORMING AND ANCHORING SYSTEMS

Onsite Solutions in  
Concrete Construction



# SNAP-TY

## Snap -Tys™



**AR Snap-Tys** are fabricated to fit either prefabricated panels or built-in-place forms. They are specifically designed for quick, easy and accurate erection of light formwork. End sizes can be as short as 1¼" for Steel Washer Snap-Tys or as long as you need them to fit a special condition. Snap-Tys can be fabricated for any required wall thickness up to 19'-6" length. Spreader washers are precisely located to give exact wall thicknesses. Break points are located at specified distances back from the wall face to permit clean stripping without spalling. All standard Tys are manufactured to provide set back from the wall face. The small Ty holes and washer indentations are easily pointed, grouted or plugged. Consult the Technical Department for minimum wall thicknesses. For exposed concrete or where a longer set back is required, the NCA Space-Ty™ is suggested.

2,250 lbs Snap-Tys are available in stainless steel upon request.

Snap-Tys are stocked in 4¾" or 8½" ends for standard wall thicknesses.

1



SNAP-TY WRENCH

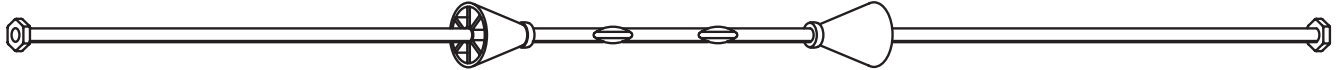


PLASTIC  
SNAP-TY PLUG



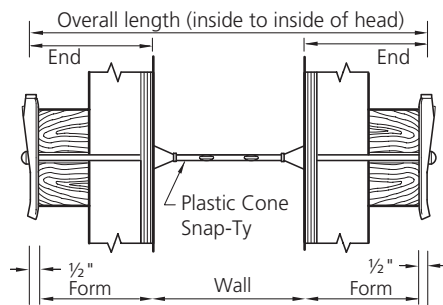
PLYHOLE  
PATCH

## Plastic Cone Snap-Ty (PC)

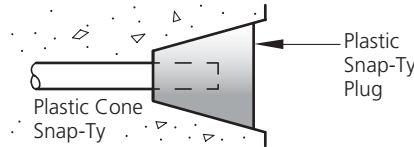


The **AR Plastic Cone Snap-Ty** and the **AR Heavy Duty Plastic Cone Snap-Ty** are equipped with a Plastic Cone Spreader providing for a 1" set back manufactured for specified wall thicknesses. The plastic cone reduces the likelihood of concrete paste thicknesses. The plastic cone reduces the likelihood of concrete paste seepage and protects the break back. The break back is approximately  $\frac{1}{8}$ " smaller than the cone length. The estimated break back is approximately  $\frac{7}{8}$ ". The table provides the length and taper of the cones. Special size cones are available as custom orders. Available in stainless steel.

| Set back | Taper Inside to outside |
|----------|-------------------------|
| 1"       | $\frac{3}{8}$ " to 1"   |



For architectural design, insert the Plastic Snap-Ty Plug once form work has been removed.



**STANDARD 2.25M**  
**SAFE WORKING LOAD**  
**2,250 LBS**

**2:1 Safety Factor**

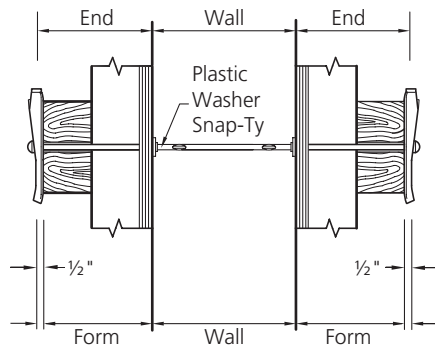
**HEAVY DUTY 3M**  
**SAFE WORKING LOAD**  
**3,000 LBS**

**2:1 Safety Factor**

## Plastic Washer Snap-Ty (PW)



The **AR Plastic Washer Snap-Ty** and **Heavy Duty Plastic Washer Snap-Ty** are equipped with a plastic washer, provide for a  $\frac{1}{8}$ " to  $\frac{3}{16}$ " break back less than the Plastic Washer Thickness and are manufactured for specified wall thicknesses. The Hex Head allows the Ty end to be broken back prior to removal of the forms, allowing for ease of stripping. Available in stainless steel.



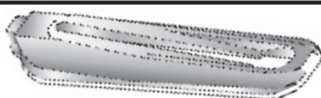
Plastic Washer break back is  $\frac{1}{8}$ " to  $\frac{3}{16}$ " less than the plastic washer thickness.

**STANDARD 2.25M**  
**SAFE WORKING LOAD**  
**2,250 LBS**

**2:1 Safety Factor**

**HEAVY DUTY 3M**  
**SAFE WORKING LOAD**  
**3,000 LBS**

**2:1 Safety Factor**



TYPE H TY-WEDGE



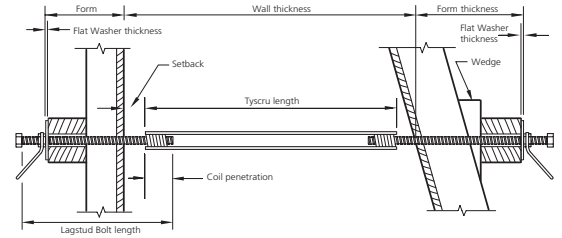
PRESSED STEEL TY WEDGE



FORM BRACE ALIGNER

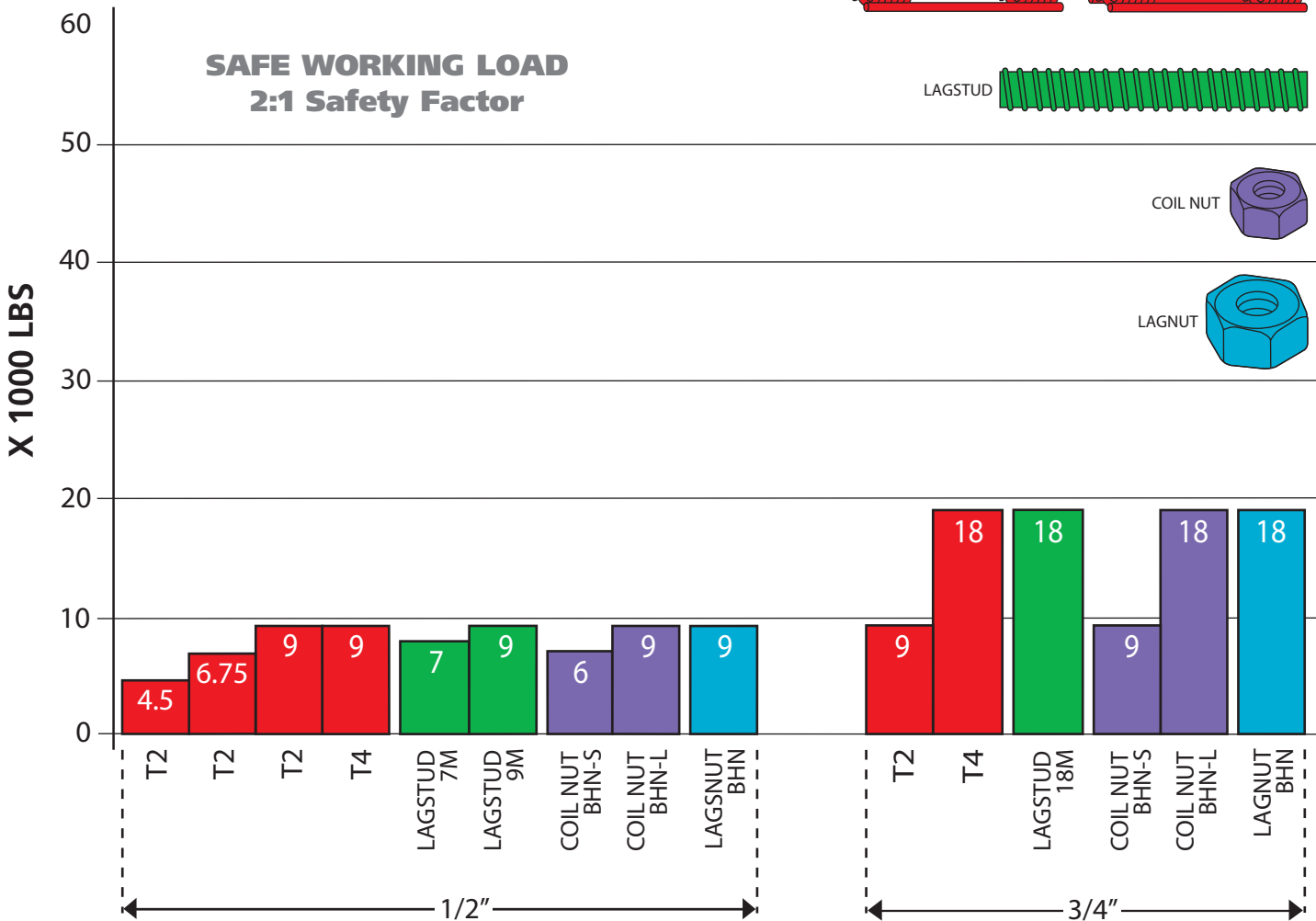
# TYSCRU

## Cone Tight Tyscru



The **AR Tyscru** is an extra strong, resistance welded Ty designed to take the abuse encountered in medium and heavy concrete construction. An extremely simple Ty, capable of many combinations and uses in the field, it may be used with or without Tycones or combined with Continuous Threaded Lagstud to form an Adjustable Tyscru.

## Tyscru Systems



## Standard Tyscru



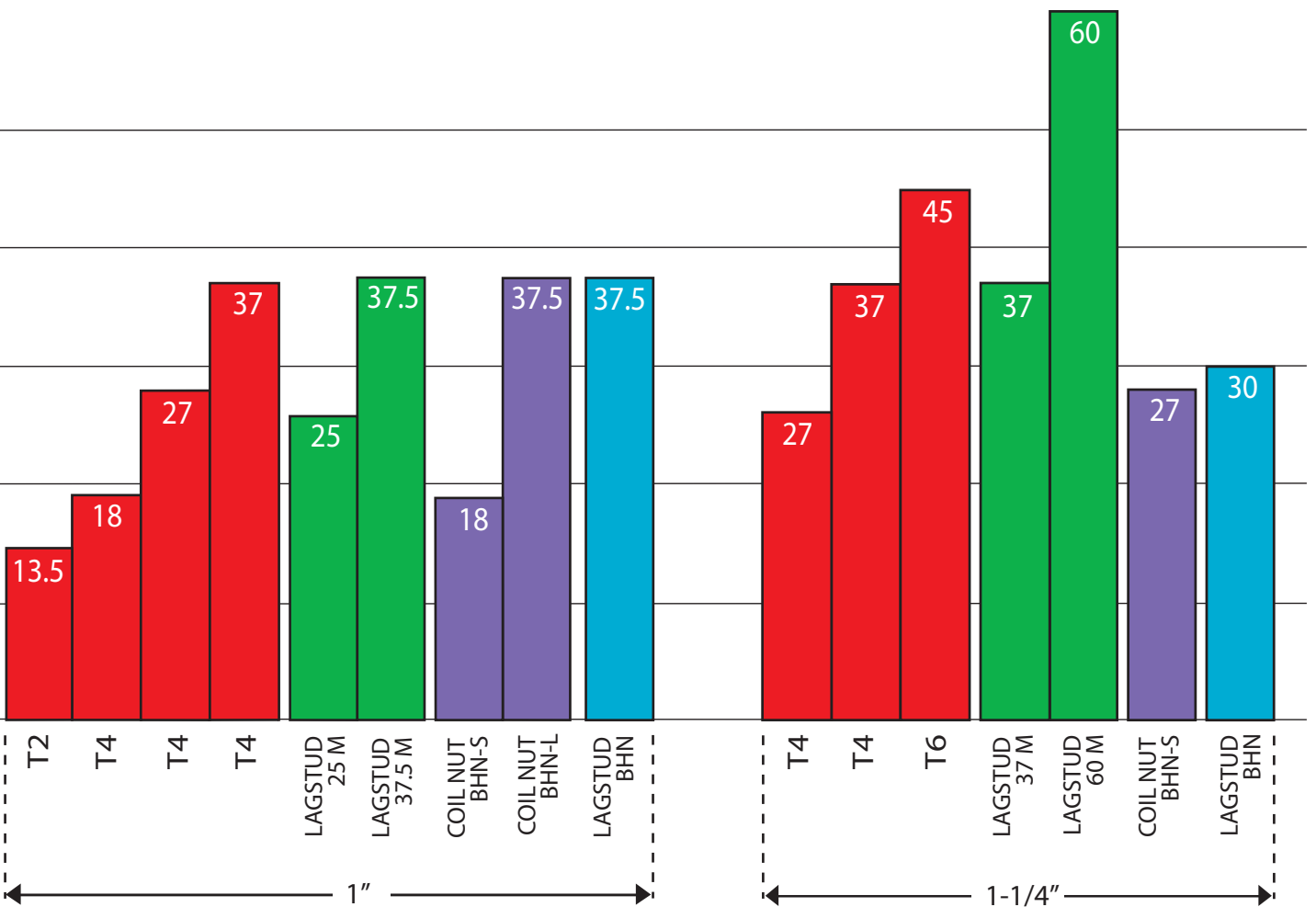
2-strut



4-strut

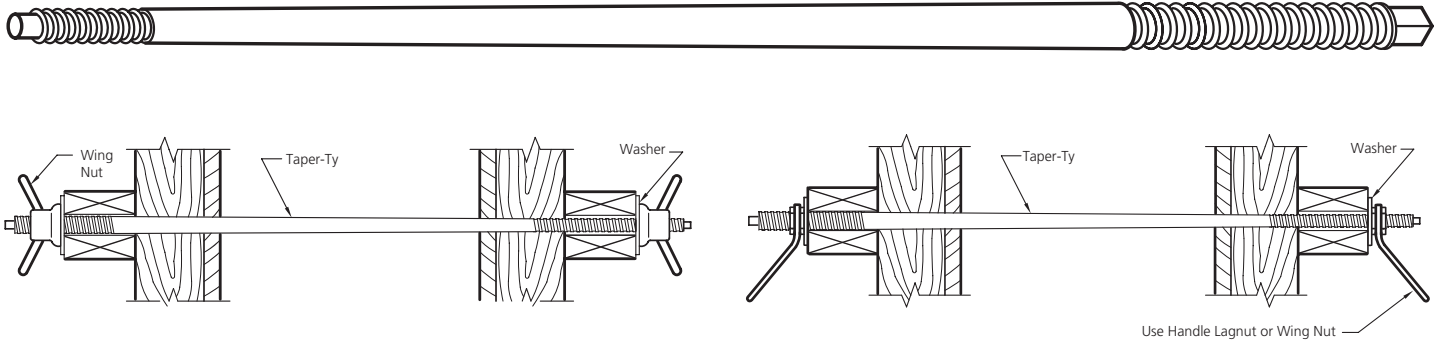
**AR Tyscrus** are available in 1/2", 3/4" and 1" diameters as 2 strut and 4 strut, fabricated to the required length to the nearest 1/8". For 1 1/4" and 1 1/2" diameters, 4 and 6 Tyscrus are available.

Cone Tight Tyscru with screw on Ty Cone or Standard ends as illustrated are available in all sizes.



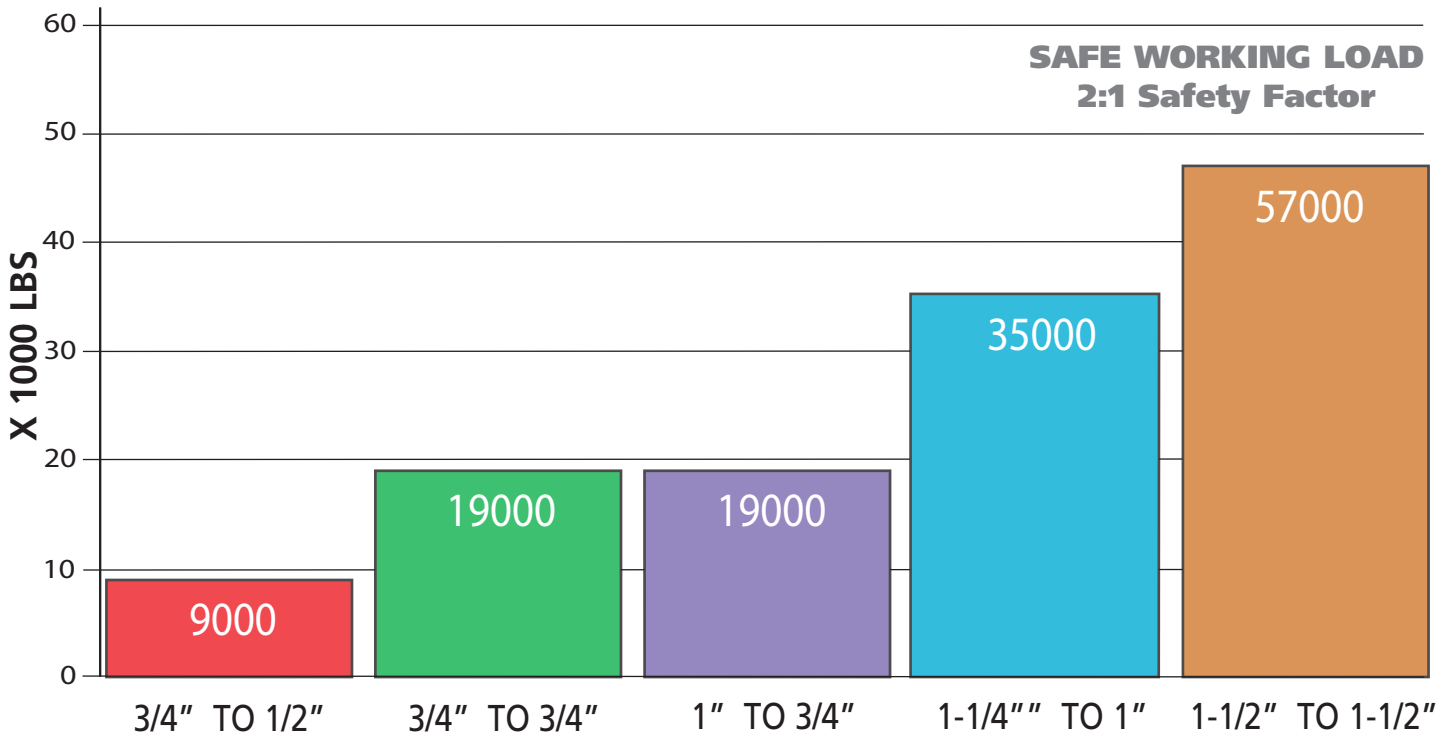
# TAPER-TY SYSTEM

## Taper-Ty System



The **AR Taper-Ty System** is used where specifications permit the complete removal of the form-tie from the concrete wall. Taper-Tys are available with lag thread and a variety of hardware.

## Taper Ty and Taper Bolt



5



HANDLE LAGNUT



FLAT WASHER



BATTER WASHER



WINGNUT



LAG THREAD COUPLER



PLASTIC FORM SPREADER

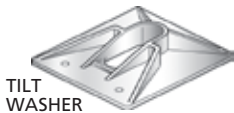
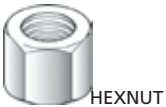
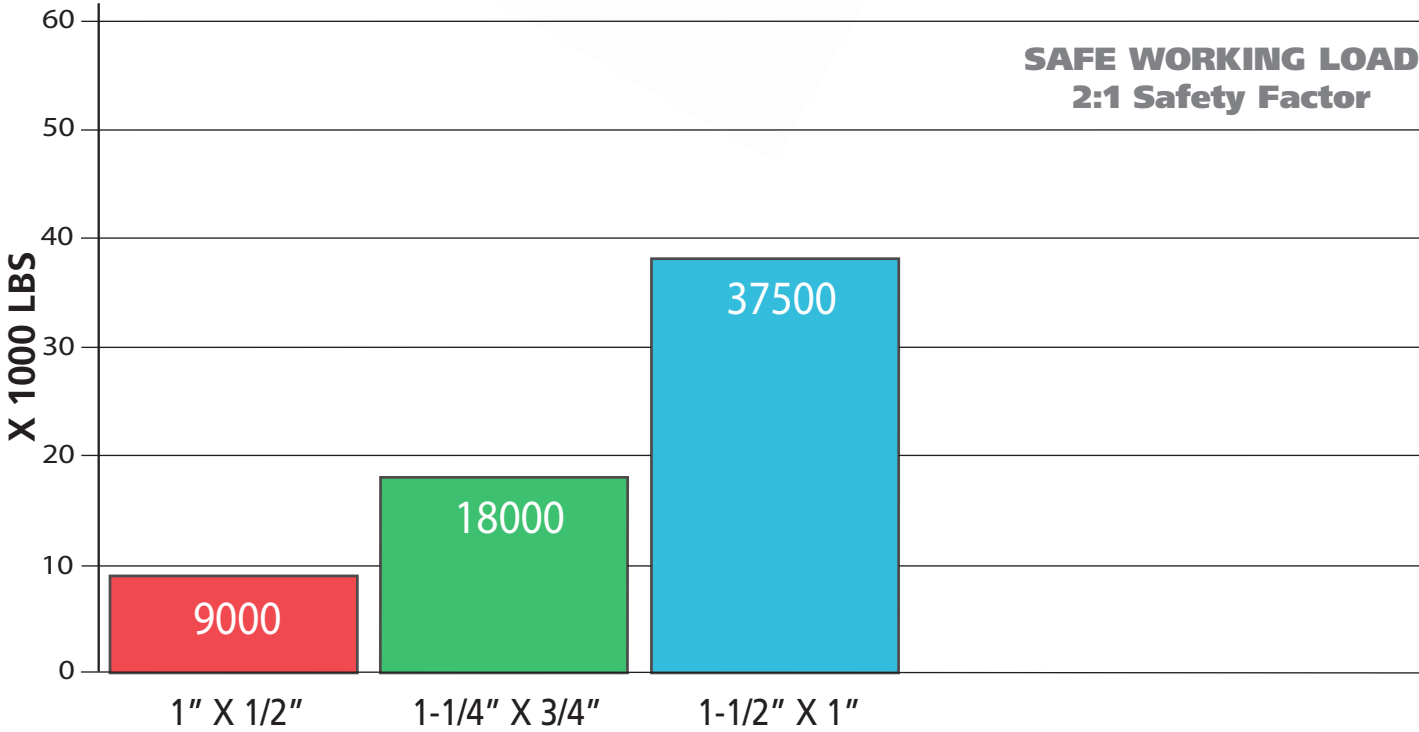
She-Bolt



**AR She-Bolt Assemblies** are high strength, adaptable units suitable for medium and heavy concrete construction. Manufactured with external lag threads, they provide a positive system for use with gang forms and/or steel forms.

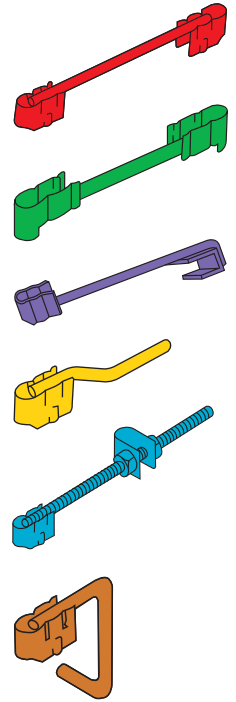
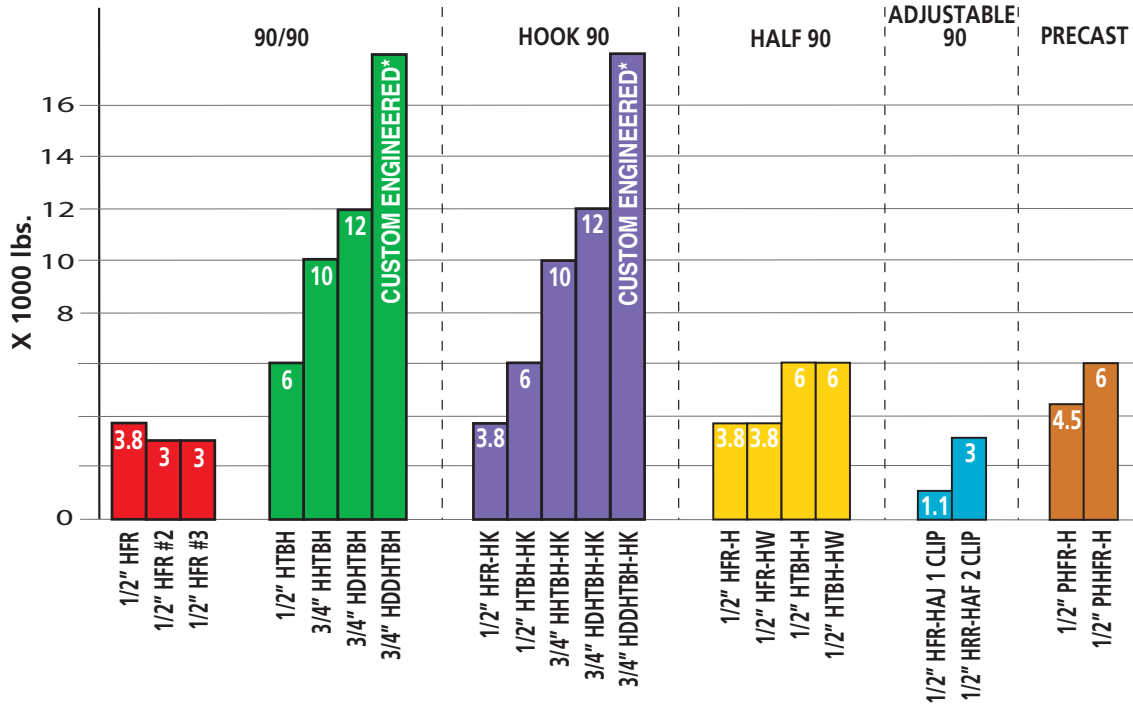
The Inside Rods are manufactured with either national coarse thread or lag thread. If desired, continuous threaded lagstud can be furnished in 5' or 10' lengths for field cutting to required specifications.

She Bolt

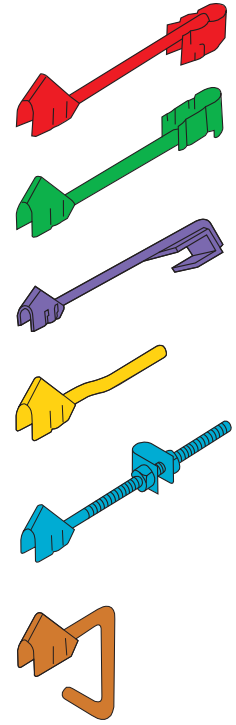
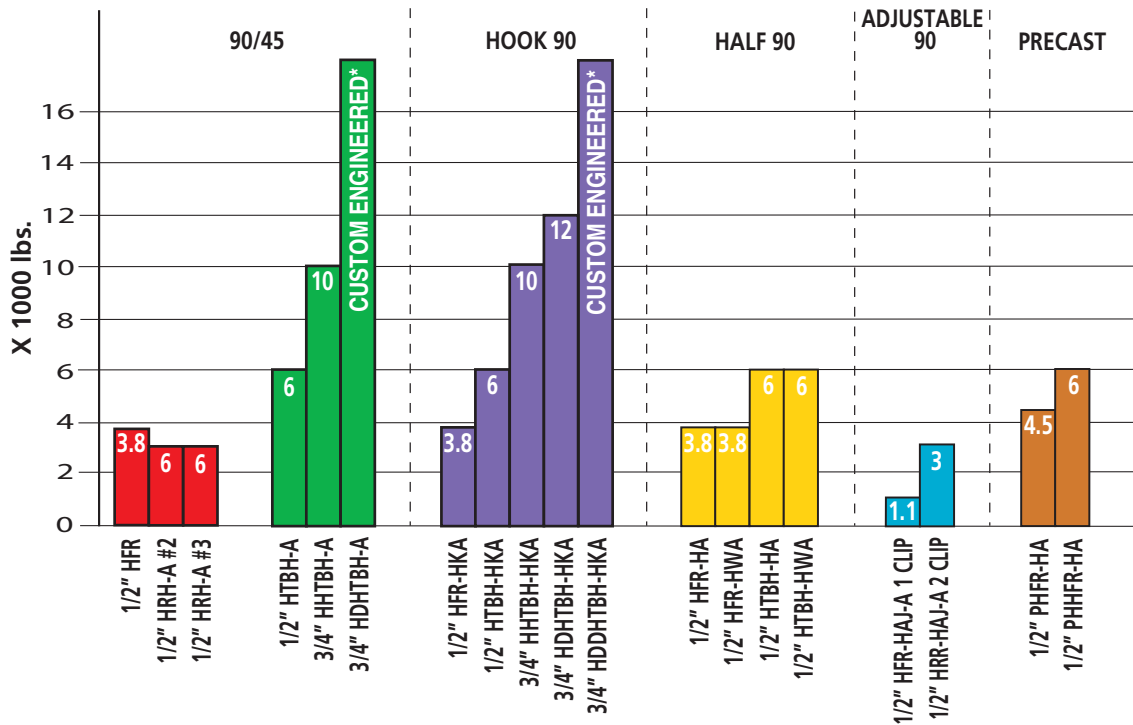


# BRIDGE

## INTERIOR SAFE WORKING LOAD 2:1 Safety Factor



## EXTERIOR SAFE WORKING LOAD 2:1 Safety Factor



\*Available as a special order



LAGSTUD



HEX NUT



FLAT WASHER



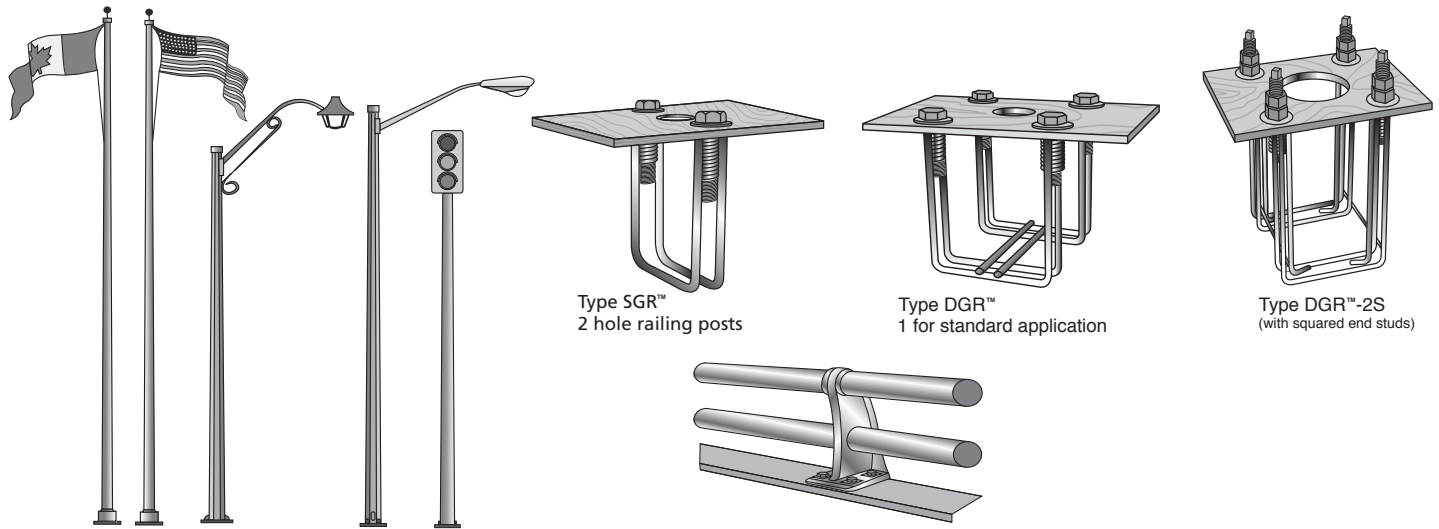
LAGSTUD BOLT



## Preset Anchoring System

**AR Preset Anchoring System** provides a simple, accurate and economical method for anchoring light poles, railings, guard rails and sign posts to structural concrete.

The basic units can be manufactured to conform with any required configuration in size that will accommodate bolts or studs (either hi-strength galvanized or stainless steel) from 1/2" to 1-1/2" in diameter.



## Crane Bolt Anchoring System

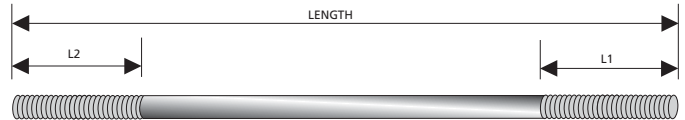
**STANDARD GRADE** (Yellow - For Summer)

- Minimum yield strength of 44,000 psi

**COLD WEATHER GRADE** (Black - For Winter)

- Charpy value of 15 ft.lb. @ -20°F

- Minimum yield strength of 60,000 psi



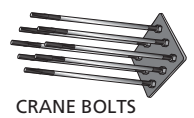
| DIAMETER | LENGTH | L1 | L2  |
|----------|--------|----|-----|
| 1 1/2"   | 48"    | 8" | 14" |
| 1 1/2"   | 40"    | 8" | 8"  |
| 1 3/4"   | 48"    | 8" | 14" |
| 1 3/4"   | 40"    | 8" | 8"  |

Other sizes available on request

## Rock Bolt Anchoring System



| HDR                   | SDR              | SCT-N                       | SCT-L                       | SST  | B-7  |
|-----------------------|------------------|-----------------------------|-----------------------------|--|--|
| SIZES 1", 1-3/8" & 2" | SIZES 1/2" TO 2" | SIZES 1", 3/4", 1" & 1-1/4" | SIZES 1", 3/4", 1" & 1-1/4" | SIZES 1", 3/4", 1", 1-1/4"<br>1-3/8", 1-1/2" 1-3/4" & 2" | SIZES 1", 3/4", 1", 1-1/4"<br>1-3/8", 1-1/2" 1-3/4" & 2" |



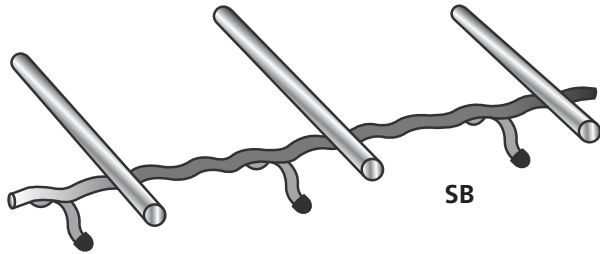
# PRECAST ACCESSORIES

## Reinforcing Bar Supports

**AR Reinforcing Bar Supports** are used to support and space reinforcing steel. AR Bar Supports are manufactured according to specifications published by the Concrete Reinforcing Steel Institute. To eliminate rust spots or similar blemishes on the concrete surface specify AR's Plastic Bar Supports.

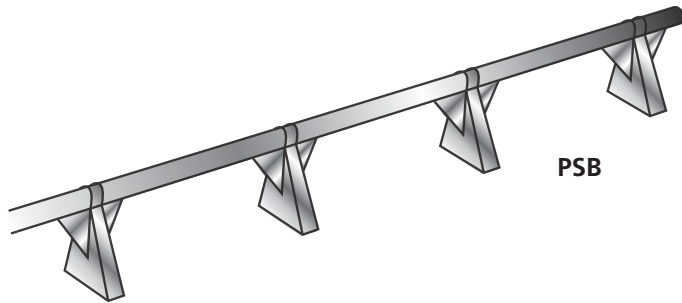
### (SB) Slab Bolster

Used for supporting lower slab steel from slab form. Corrugations spaced 1" (25 mm) on centres serve as guides for spacing bars. Legs are spaced 5" (127 mm) on centre. Stocked in 3/4", 1", 1 1/2", 2" (20, 25, 38 and 50 mm) in heights in 5' (1525 mm) lengths.



### (PSB) Slab Bolster And All Plastic Continuous High Chair

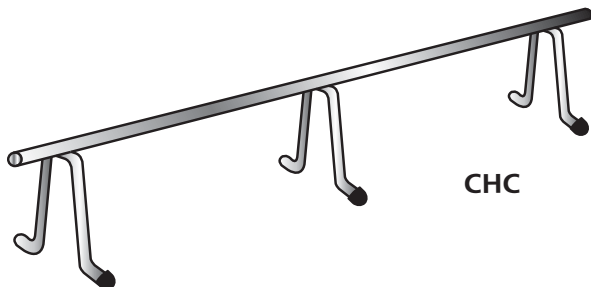
**AR Plastic Slab Bolster** is used for supporting lower slab steel from slab form. Corrugations spaced 1" (25 mm) on centres serve as guides for spacing bars. Legs are solid plastic 4" (100 mm) on centre. Supporting cross bar is made from high strength plastic coated steel. Corrosion-proof and lightweight for handling.



| HEIGHT |      |       |       |
|--------|------|-------|-------|
| in     | (mm) | in    | (mm)  |
| 3/4    | (20) | 5     | (125) |
| 1      | (25) | 5 1/2 | (138) |
| 1 3/4  | (32) | 6     | (150) |
| 2      | (50) | 6 1/2 | (163) |
| 2 1/2  | (63) | 7     | (175) |

### (CHC) Continuous High Chair

**AR Continuous High Chairs** provide support for upper slab steel from slab form, eliminating carrier bars required with individual supports. Fabricated with plain steel legs (CHC) or with plastic tipped legs (PCHC). Supplied to order in heights from 2" to 12" (50 mm to 300 mm) in 1/4" (5 mm) increments and in 5' (1525 mm) lengths with legs spaced at 6" (150 mm) o.c.

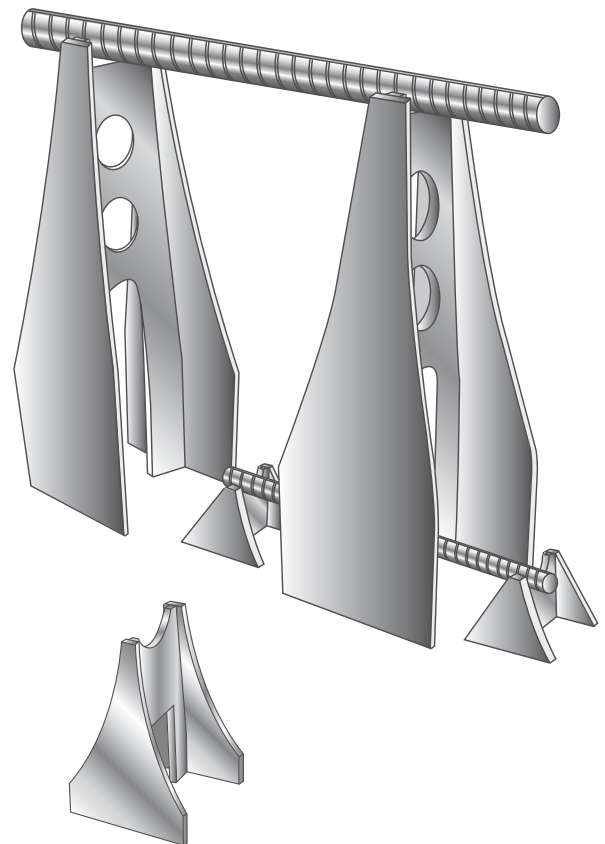


## Linden Chairs

Corrosionfree All Plastic Linden Chairs are used in slabs for supporting all types of reinforcing steel. Excellent for supporting epoxy coated rebar in bridge deck construction, or where-ever a corrosion free support is required. The high sizes have an arch design for straddling lower mats of rebar. The chair is made of High Impact polypropylene and its design gives it the strength of steel. Linden chairs are strong yet light in weight and packaged in poly bags for convenience of carrying around job sites.

| LINDEN CHAIRS SIZES AND PACKAGING WEIGHTS |     |         |         |          |          |
|---|-----|---------|---------|----------|----------|
| inch                                      | mm  | PCS/BAG | LBS/MFT | CTN SKID | SKID QTY |
| 1   | 25  | 500     | 30      | 40       | 20,000   |
| 1 1/4                                     | 32  | 500     | 35      | 40       | 20,000   |
| 1 1/2                                     | 40  | 250     | 46      | 40       | 10,000   |
| 1 3/4                                     | 45  | 250     | 50      | 40       | 10,000   |
| 2   | 50  | 250     | 62      | 40       | 10,000   |
| 2 1/4                                     | 58  | 200     | 78      | 40       | 10,000   |
| 2 1/2                                     | 63  | 200     | 82      | 40       | 8,000    |
| 2 3/4                                     | 70  | 300     | 84      | 25       | 7,500    |
| 3   | 75  | 300     | 85      | 25       | 7,500    |
| 3 1/4                                     | 77  | 300     | 88      | 25       | 7,500    |
| 3 1/2                                     | 85  | 300     | 90      | 25       | 7,500    |
| 3 3/4                                     | 92  | 200     | 93      | 25       | 5,000    |
| 4   | 100 | 200     | 95      | 25       | 5,000    |
| 4 1/4                                     | 108 | 200     | 98      | 25       | 5,000    |
| 4 1/2                                     | 110 | 200     | 112     | 25       | 5,000    |
| 4 3/4                                     | 120 | 200     | 119     | 25       | 5,000    |
| 5   | 125 | 200     | 120     | 25       | 5,000    |
| 5 1/4                                     | 133 | 200     | 125     | 25       | 5,000    |
| 5 1/2                                     | 140 | 200     | 130     | 25       | 5,000    |
| 5 3/4                                     | 146 | 200     | 148     | 25       | 5,000    |
| 6   | 150 | 100     | 155     | 25       | 2,500    |
| 6 1/4                                     | 158 | 100     | 160     | 25       | 2,500    |
| 6 1/2                                     | 165 | 100     | 177     | 25       | 2,500    |
| 6 3/4                                     | 170 | 100     | 184     | 25       | 2,500    |
| 7   | 175 | 100     | 195     | 25       | 2,500    |
| 7 1/4                                     | 183 | 75      | 255     | 25       | 1,875    |
| 7 1/2                                     | 190 | 75      | 310     | 25       | 1,875    |
| 7 3/4                                     | 195 | 75      | 338     | 25       | 1,875    |
| 8   | 200 | 75      | 343     | 25       | 1,875    |
| 8 1/4                                     | 210 | 75      | 350     | 25       | 1,875    |
| 8 1/2                                     | 215 | 50      | 365     | 25       | 1,250    |
| 8 3/4                                     | 220 | 50      | 378     | 25       | 1,250    |
| 9   | 228 | 50      | 400     | 25       | 1,250    |
| 9 1/4                                     | 235 | 50      | 415     | 25       | 1,250    |
| 9 1/2                                     | 240 | 50      | 424     | 25       | 1,250    |
| 9 3/4                                     | 247 | 50      | 430     | 25       | 1,250    |
| 10  | 254 | 50      | 440     | 25       | 1,250    |

| LINDEN CHAIR DATA SHEET |  |
|-------------------------|--|
| Size Available          | 1-10 inches (25-254mm) every 1/4" (6mm)  |
| Colour                  | concrete grey  |
| Material                | reinforced, high impact polypropylene  |
| Strength                | a minimum 400 lbs. (180kg) / chair   |
| Chemical Resistancy     | excellent  |
| Packaging               | in heavy-duty uv protected poly bags<br>Quantity varies by size  |
| Installation            | good for both Black and Corrosion resistant rebar place chairs on deck forms can straddle bottom steel bars spacing depends on loads standard spacing is every 3-4 feet (0.9 - 1.2m) |

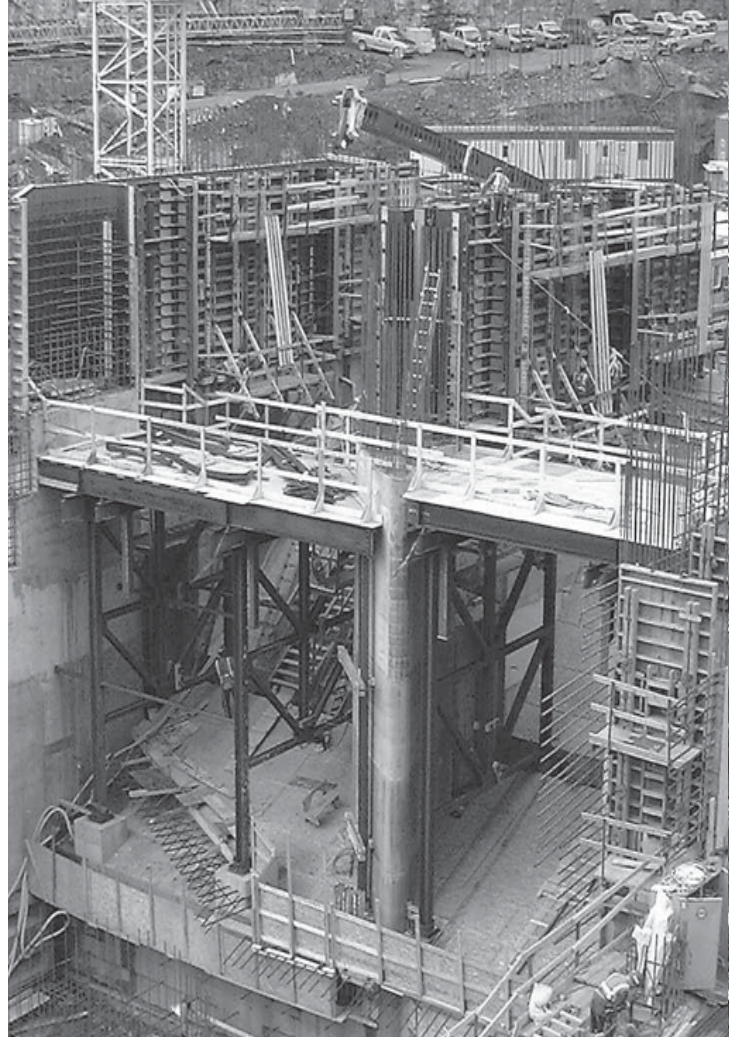




ACROW-RICHMOND  
THE HIDDEN STRENGTH™  
LA FORCE CACHÉE

Acrow-Richmond provides over 50 years of experience in on site solutions and is one of North America's leading manufacturers and distributors of concrete form hardware, accessories and construction products.

Acrow-Richmond is committed to delivering exceptional value to our customers, our employees, our suppliers and our shareholders through operational excellence, providing innovative and quality products, and maintaining the highest level of professionalism, integrity, honesty and fairness.



## Other Available Catalogues

- Concrete Forming Systems
- Precast Concrete Products
- Bridge Deck Forming & Hanging Systems
- Concrete Anchoring Systems
- Rock Anchoring and Bolt Systems